

CERTIFIED LAND CORNER RECORDATION

DESCRIPTION OF CORNER EVIDENCE FOUND, AND ORIGINAL RECORD (if known)

LOCATION

Found a 3/4" dia. x 18" long iron pipe.

S.15 S.14
S.22 S.23

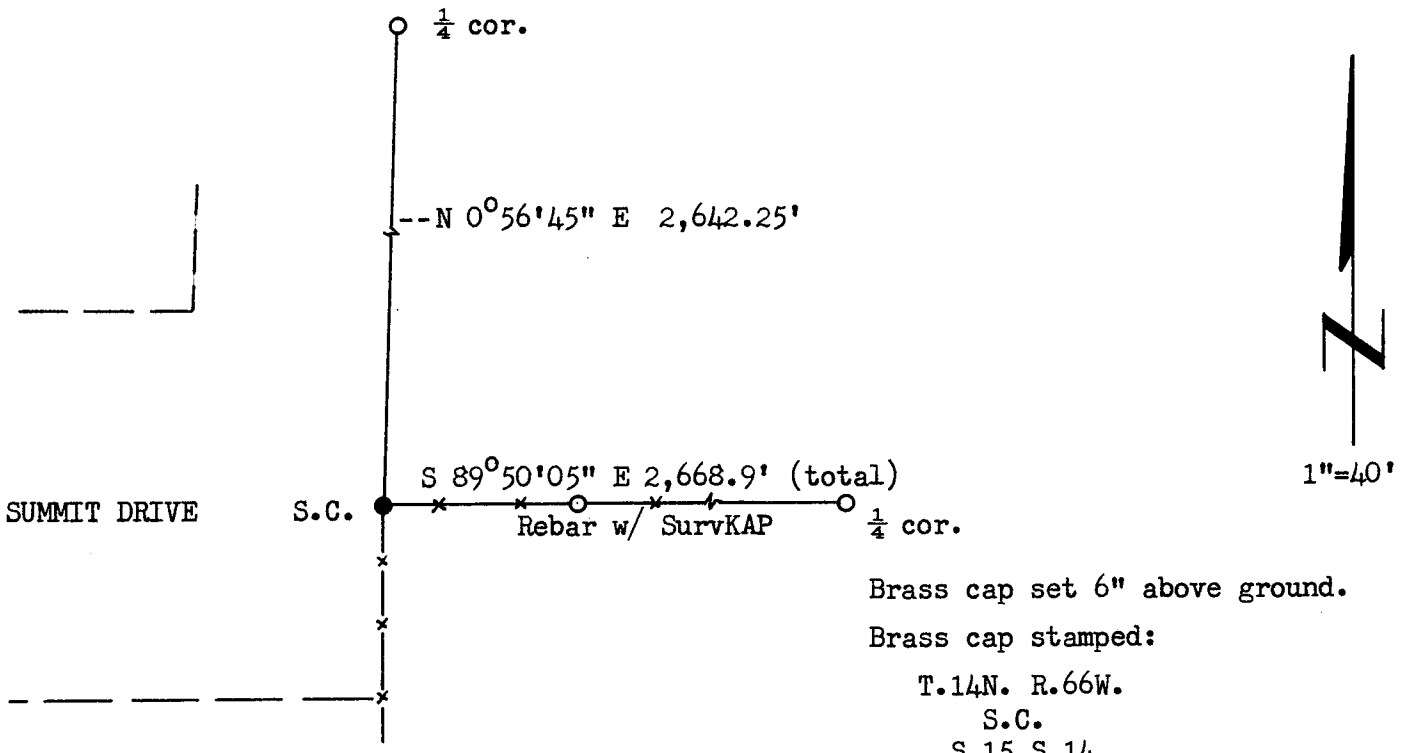
T.14N., R.66W.
6th P.M.

DESCRIPTION OF MONUMENT AND ACCESSORIES ESTABLISHED
TO PERPETUATE THE ORIGINAL LOCATION OF THIS CORNER:

At the corner: Set a 1 1/2" dia. x 30" long iron pipe with brass cap.
Accessories: A 5/8" dia. x 24" long rebar with SurvKAP bears S 89°50'05" E, 40.00 feet distant.
Left pipe in fence as memorial.

SKETCH, WITH COURSE AND DISTANCE TO ADJACENT CORNER IF DETERMINED IN THIS SURVEY.
(May Sketch or Paste Reproduction on Reverse Side.)

Basis of Bearing - By solar observation.



Brass cap set 6" above ground.

Brass cap stamped:

T.14N. R.66W.

S.C.

LS519 S.15 S.14 1973
S.22 S.23

I, R.L. Hudson certify that I have carefully performed or reviewed the work done on the diagrammed corner as reported on this recordation form and approve the same.

R.L. Hudson
Signature of Surveyor

Wyoming L.S. No. 519
Registration No.

STATE OF WYOMING,
Office of Clerk and Recorder,
County of Taramie

This "corner record" was filed for record on the 29th day of May, 1973, was noted on the cross-index plat and is assigned page No. 14-66, in book No. ONE.

Johy B. Hillman
County Official

Cross Index No. _____	T. _____	R. _____	Mer. _____
_____	T. _____	R. _____	Mer. _____
_____	T. _____	R. _____	Mer. _____
_____	T. _____	R. _____	Mer. _____
_____	T. _____	R. _____	Mer. _____
_____	T. _____	R. _____	Mer. _____
_____	T. _____	R. _____	Mer. _____

289683

Photographed.....
Indexed ✓
Posted DM

The State of Wyoming }
County of Laramie } SS

This instrument was filed for record
at 9:54 o'clock A.M. on the
29 day of May
A. D. 19 23 and duly recorded in

Book or Page

John A. Williams

County Clerk & Ex-Officio Register of Deeds
Shirley August, Deputy